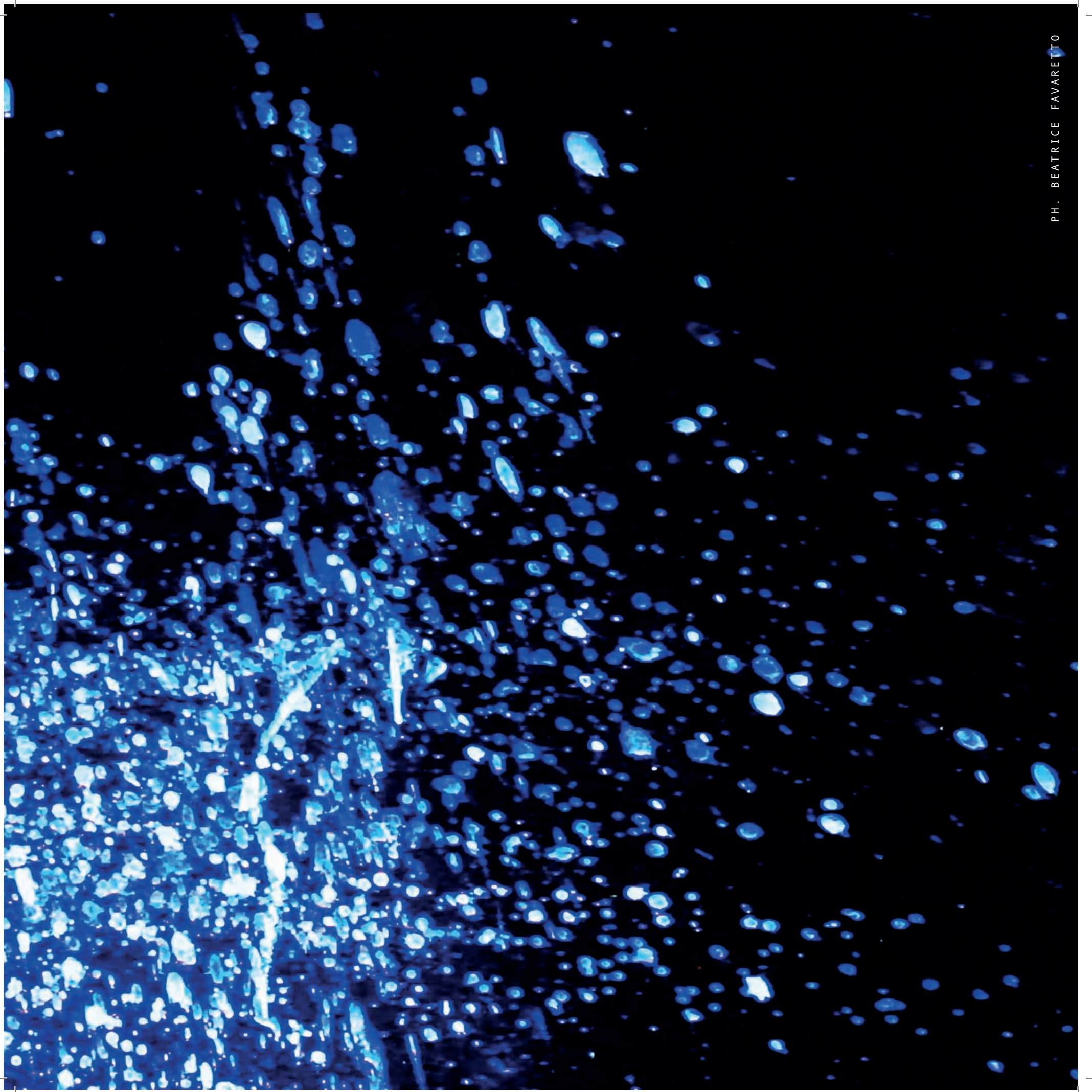
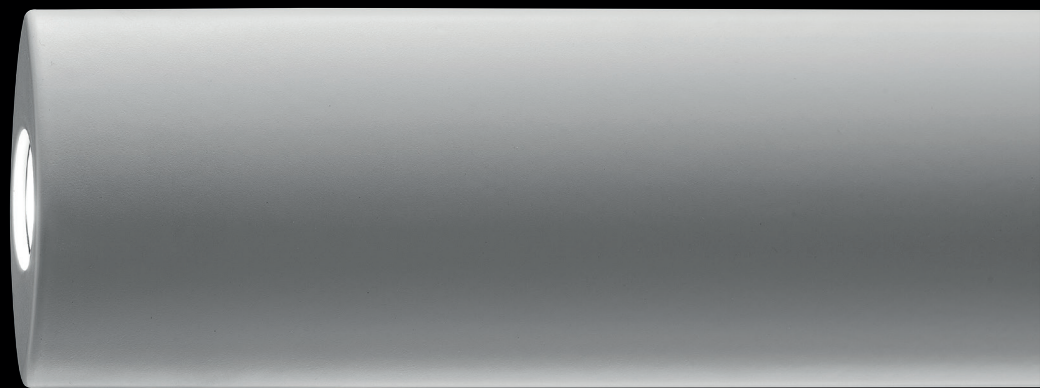
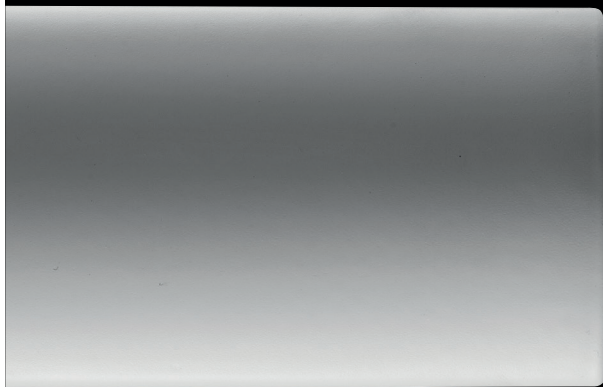


X I S L X I U I L L S I X U I X S L U



F E R X E R A L I N U O V A U X F E S I L L U X I N I N I Z E M O Z I O N E R I S R I
V S I E R A D L E N E R G I A R T T E R R A S L U X A C Q U A I E I B E A T R
Z T I O D E D E S I G N Y K E A T M A T E R I A U K U X L U C E I E R O H K S I
N 0 1 F E R T S X U I L S C O P E R T A J D C V X B A R T W 3 0 A N N I Z L 2 0 1 5



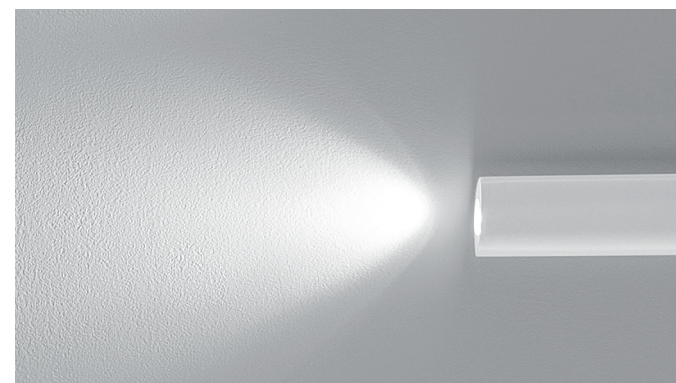
OVALINA CLAUDIOSACCON



LP 6/298 A



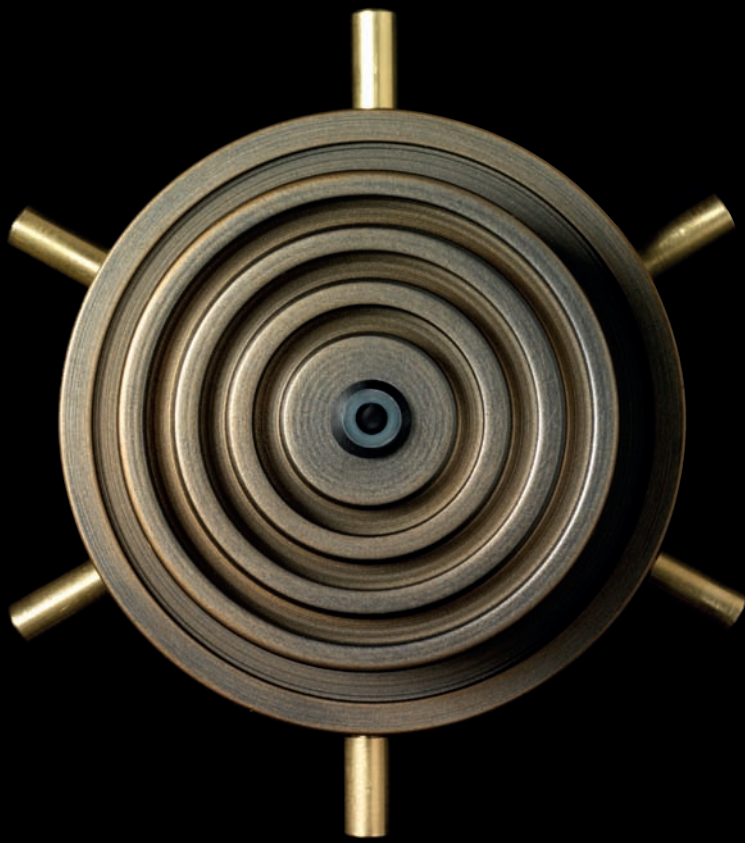
LP 6/298 B



SP 6 / 2.98



F E R X O V A L I N A L I U X F E S I L L U X I N I N I Z P E N S I E R O R I S R I
V S I E R A D L S P A Z I O R T V I A G G I O S L U X O C C H I O I E I B E A T R
Z T I O D E D E S I G N Y K E A T L U C E U K U X E M O Z I O N E I E X R I O H K S I
V S I E R A D L B I A N C O R T N E R O S L U X C O R T E N I E I B E A T R
N 0 2 F R T S X U I L S C O P E R T A J D C V X B A R C L A U D I O U K U X S A C C O N





SP 7/295

HEART ORIANOFAVARETTO



LT 1/295



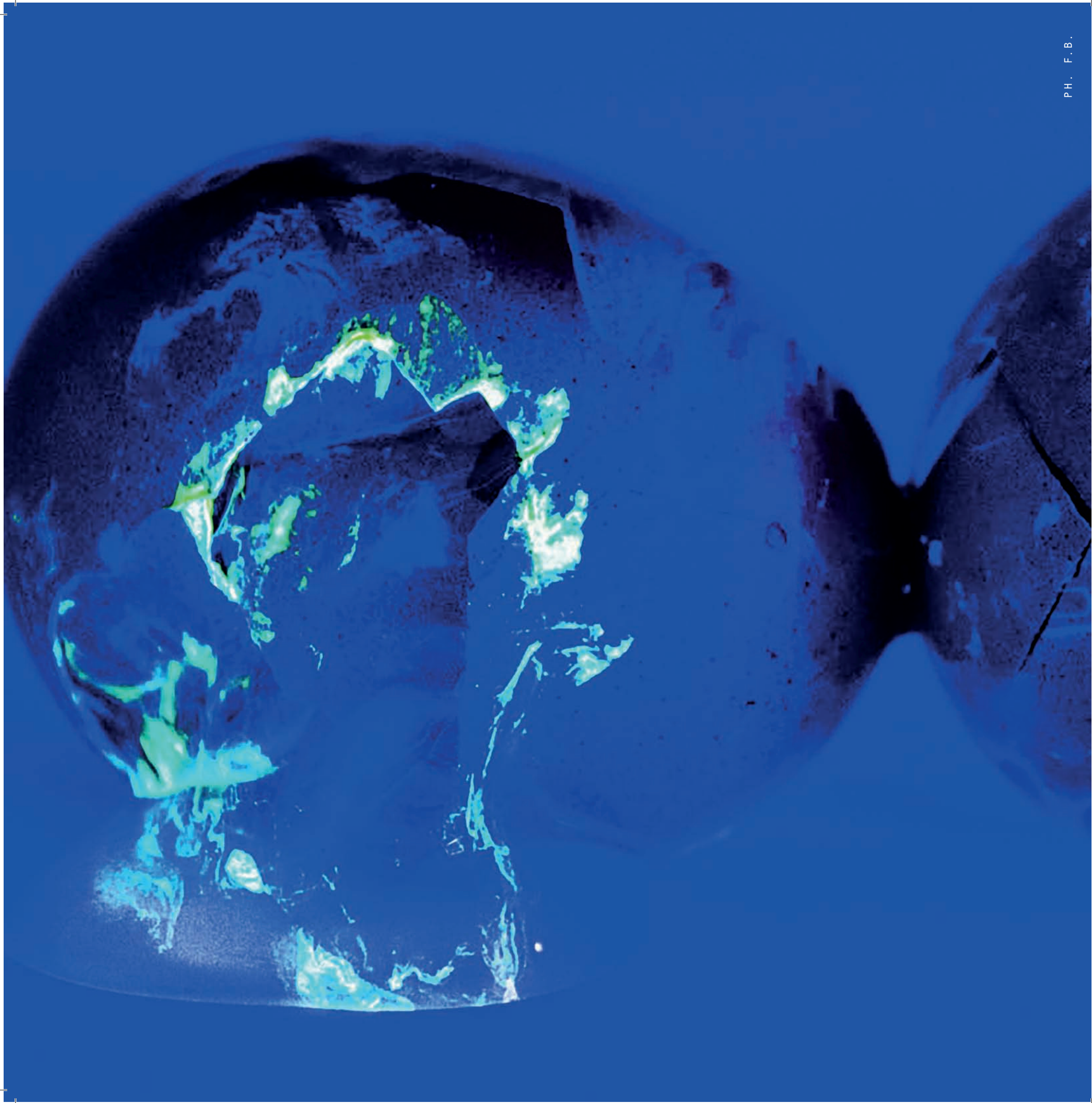
LP 6/295

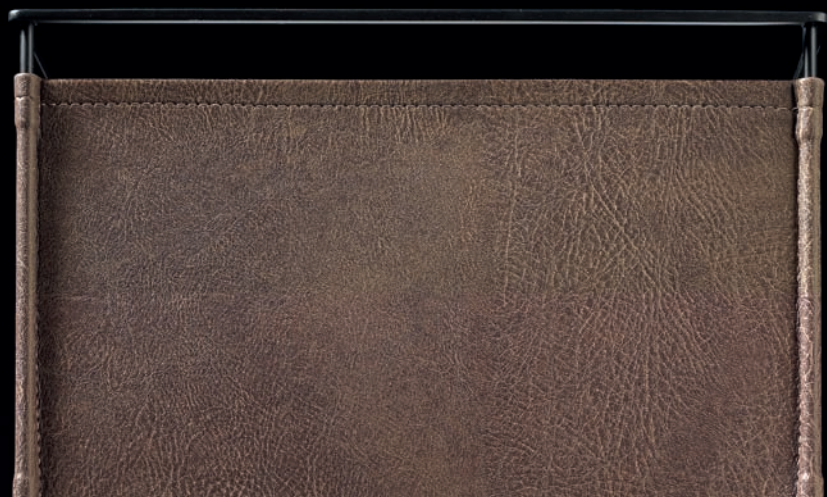


S.P. 8 / 2.95



F E R X H E A R T L I U X F E S I L L U X I N I N I Z P E N S I E R O R I S R I
V S I E R A D L V E T R O R T F O R M A S L U X B R U N I T O I E I B E A T R
Z T I O D E D E S I G N Y K E A M T L E D U K U X E M O Z I O N E I E X R I N E R O S I
V S I E R A D L B R O N Z O S A T I N A T O R T N E R O S L U X L E D 5, 5 W U X Y M O T W
N 0 3 F E R T S X U I L S C O P E R T A J D C B A R O R I A N O U K U X F A V A R E T T O





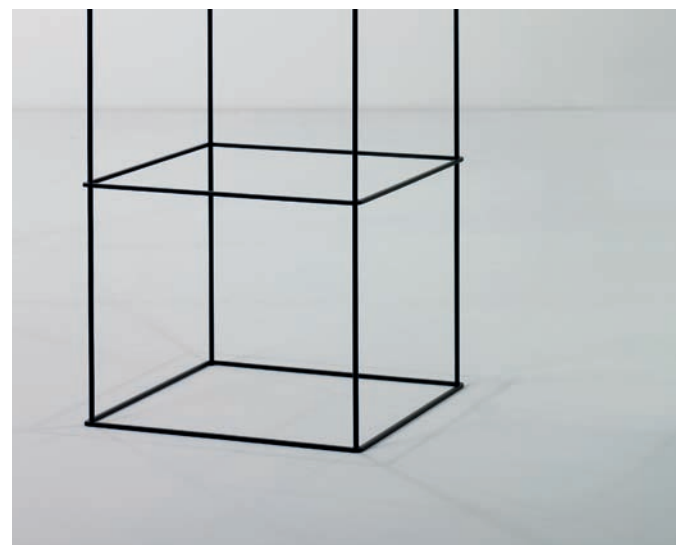
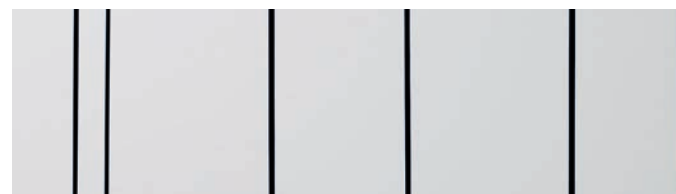


SAVANÀ TEAMDESIGN

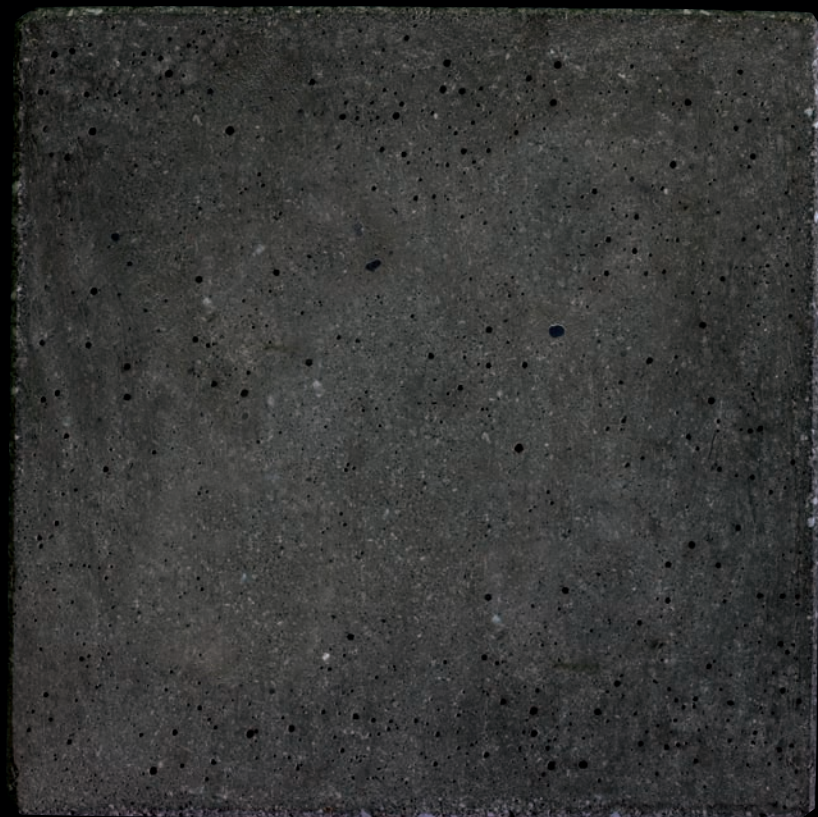
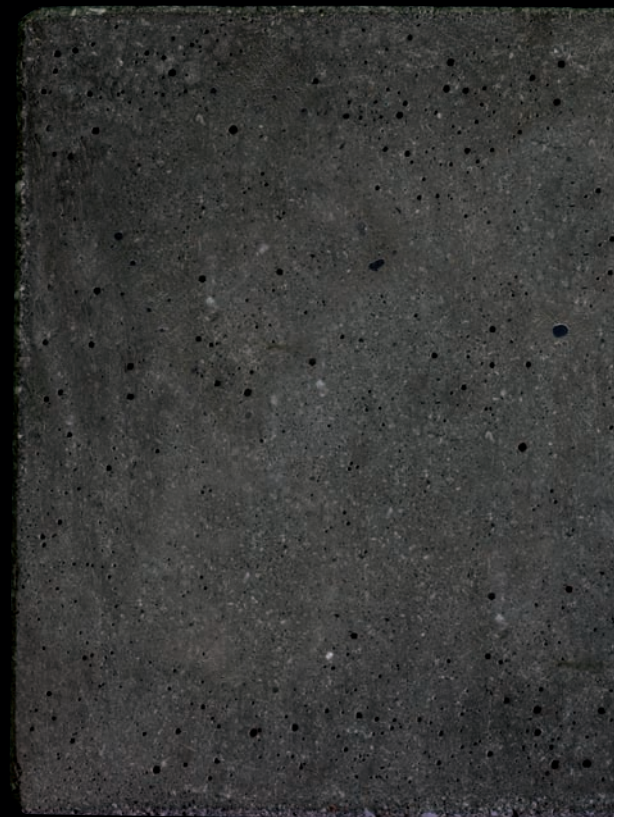


LT 1/297

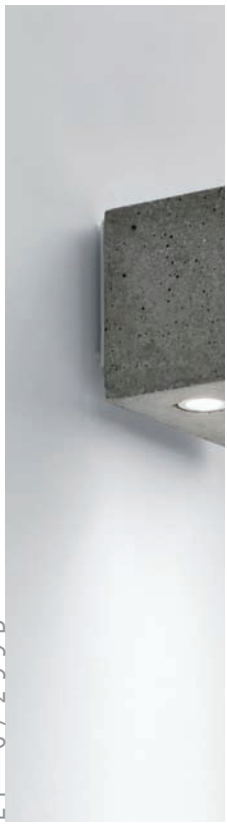




F E R X S A V A N À L I U X F E S I L L U X I N I N I Z T E X T U R E R I S R I
V S I E R A D L P E L L E R T O D O R E S L U X S A B B I A I E I B E A T R
Z T I O D E D E S I G N Y K E A M T L U C E U K U X E M O Z I O N E I E X R I A C Q U A
V S I E R A D L N E R O R T N I C H E L S M Y L U X E 2 7 I E I B E A T R
N 0 4 F E R S T S X U I L C U C I T U R E J D C B A R T E A M U K U X D E S I G N



L.P. 6/299B



FORATA SACCON - FAVARETTO

L.T. 1/299



S.P. 7/299





LP 6/299A

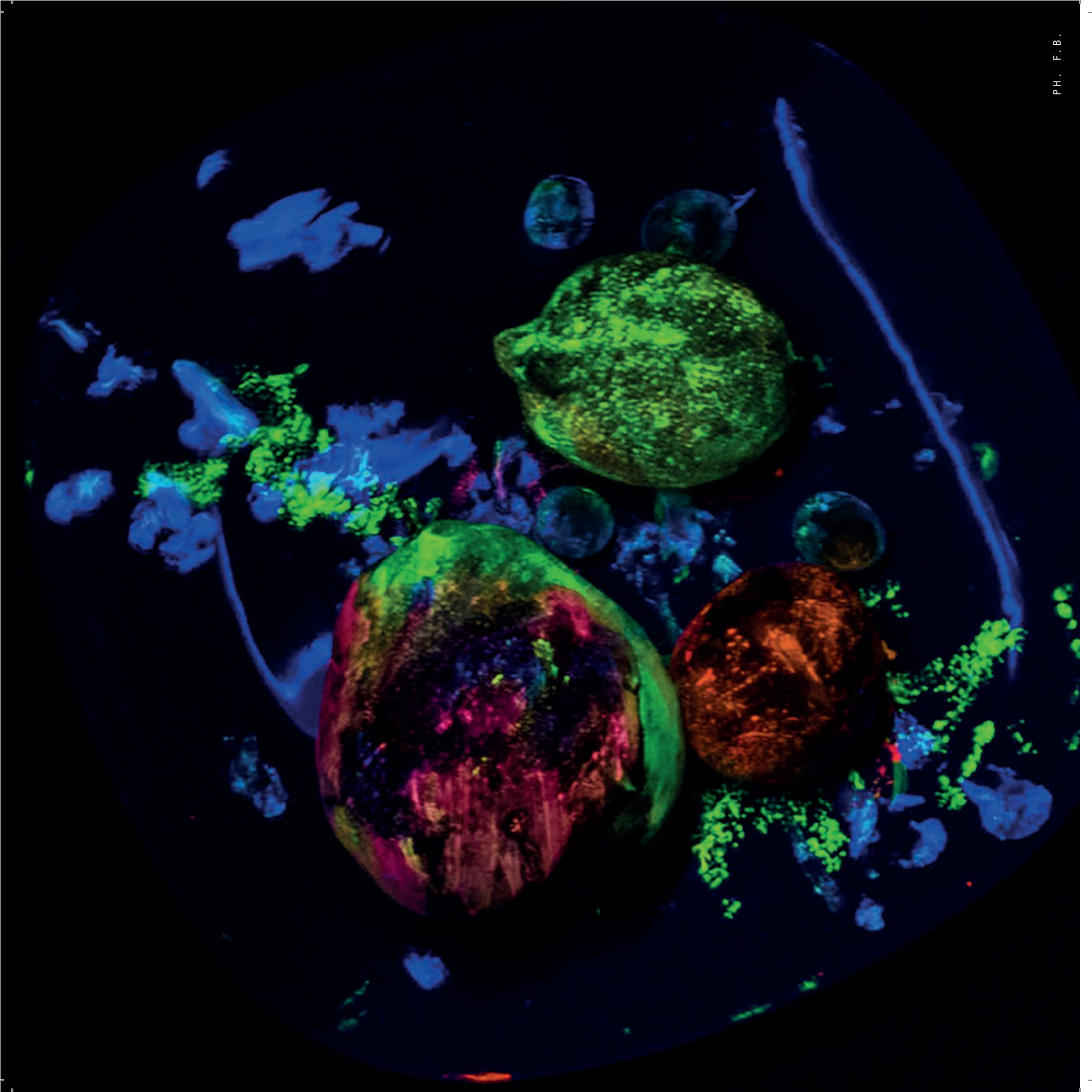


SP 7/299



SP 8/299

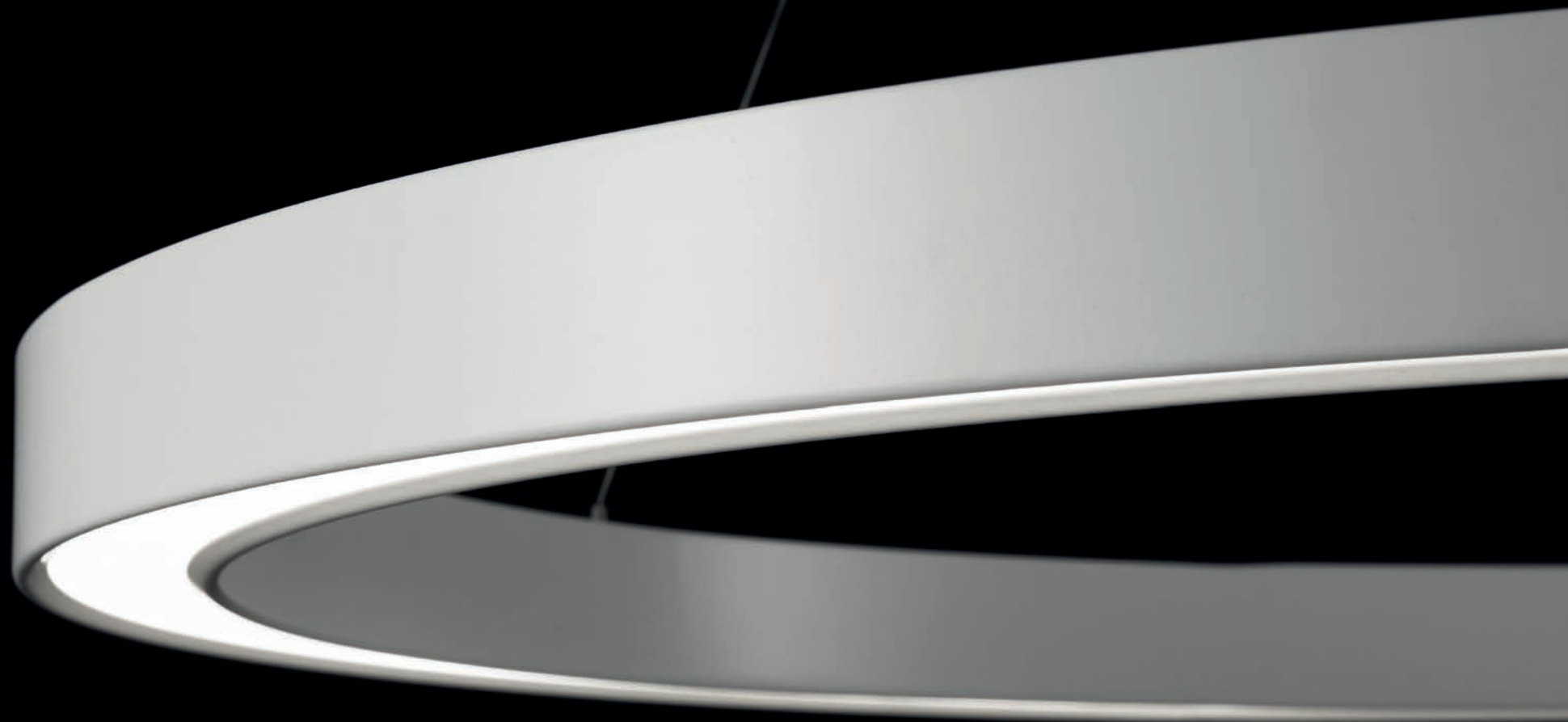
F E R X F O R A T A L I U X F E S I L L U X I N I N I Z S A S S O R I S R I
V S I E R A D L C U B O R T C O L A T A S L U X P E S O I E I B E A T R
Z T I O D E D E S I G N Y K E A M T L E D U K U X G R I G I O I E X R I A C Q U A S I
V S I E R A D L B I A N C O R T A C C I A I O S L U X B R O N Z O I E I B E A T R
N 0 5 F E R T S X U I L I M P A S T O J D C B A R S A C C O N U K U X F A V A R E T T O







SP 8/300 Ø1150



S K Y R I N G F R A N C O D R I U S S O

F E R X S K Y R I N G L I U X F E S I L L U X I N I N I Z D I N A M I C A R I S R I
V S I E R A D L S P A Z I O R T G E S T O S L U X C O S T A I E I B E A T R
Z T I O D E D E S I G N Y K E A M T L E D U K U X B I A N C O I E X R I A R I A S I
V S I E R A D L B I A N C O R T N E R O S L U X B R O N Z O I E I B E A T R
N 0 6 F E M S X U I L O R B I T A J D C B A R F R A N C O U K U X D R I U S S O





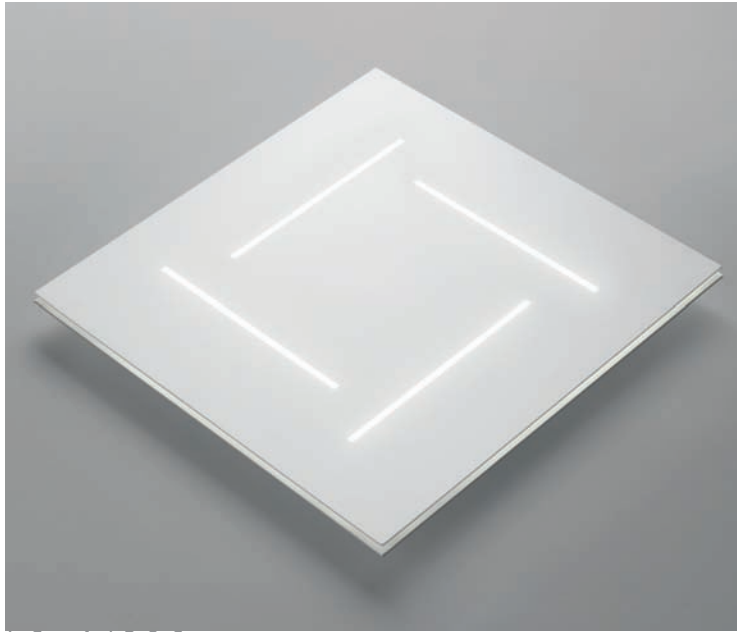
L.P. 6/296A

T R A I L S E R G I O S A R T O R E L L O



S.P. 7/296





LS 4/296



LI 1/296



PI 3/296



F E R X T R A I L U I U X F E S I L L U X I N I N I Z L I N E A R I S R I
V S I E R A D L S P A Z I O R T M I N I M A L S L U X T A G L I O I E I B E A T R
Z T I O D E D E S I G N Y K E A M T L E D U K U X C O N C E T T O I E X R I N E R A S I
V S I E R A D L B I A N C O R T N E R O S L U X T I T A N I O I E I B E A T R
N 0 7 F E X U I L B I A N C A J D C B A R S E R G I O U K U X S A R T O R E L L O

N02 OPALINA



60X35

LP 6/298A L60 H600
LP 6/298B L60 H1200
SP 7/298 L600X600 H1200

N03 HEART



Ø140

H170

SP 7/295 Ø140 H1200
SP 8/295 Ø800 H1400
LP 6/295 SP140 H170
LT 1/295 H170 L140

N04 SAVANÀ



L500

H200

LT 1/297 H370 L200 P150
LT 2/297 H380 L350 P15
LP 6/297 H200 L350 P170
SP M/297A L350X350 H1200
SP M/297B L500X500 H1200
SP R/297A L700X300 H1200
SP R/297B L1000X300 H1200
PI 3/297 H1440 L350X350

N05 FORATA / 4



120X120

H100

LT 1/299 H240 L120X120
LP 6/299B H120 S100
LS 4/299 H120 S100
SP 7/299 H1200 L100X100

N05 FORATA / 5



Ø80

H130

LP 6/299A H300 Ø80
SP 8/299 H300 Ø80 L1200

N06 SKYRING



SP 7/301 Ø800 H1200
Ø1150 8/301 H1200
Ø1500 M/301 H1200

N07 TRAIL



L500

H200

LT 1/296 H340 L60
LP 6/296A H60 L320
LP 6/296B H60 L320 P40 P170
LS 4/296 H550 L550 P55
PI 3/296 H2000 L65
LP 7/296 L1400 L65 H200

3 0 0 2 0 E R X M 0 Q U A R T O D' A L T I N O K M I V E Q O P I T A L Y
E R M X M V I A I S G I O V A N N I X F P A S C O L I, 3 5 / A R T O L
I T +3 9 0 4 2 2 8 2 4 7 5 6 U X V S X B T G J W W W. S I L L U X .C O M
X I N F O @ S I L L U X .C O M V M I S I L L U X A D © 0 4 / 2 0 1 5 R A
F E R X C O N C E P T U I U B E A T R I C E I N I Z F A V A R E T T O R I S R I
D R I P H O T O U I U S T U D I O I N I Z P O I N T E R R I S R I N O R Q R U

X I S L X I U I L L S I X U I X S L U